

Series CM - 30, 40 & 50

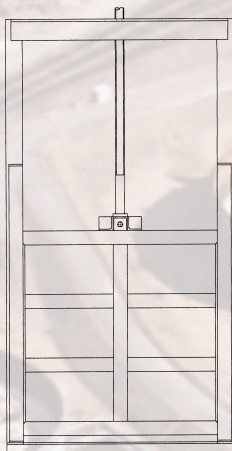
CHANNEL MOUNTING PENSTOCKS

150mm Square to 2000mm Square Apertures

The series CM - 30, 40 & 50 is a high duty range of penstocks suitable for the control and isolation of water and sewage. The range of penstocks are provided with side and invert seals for on and off-seating heads upto door depth.

Advantages

- Lightweight design - reduced weight when compared to the cast iron equivalent offers easier handling, installation and reduced civil work
- Low friction seals ensures operator sizes are kept to a minimum significantly reducing operating costs
- Available in corrosion resistant materials:
 - Long Life Performance
 - Low Maintenance Costs
 - No Protective Coatings Required
- Flush invert design avoids pockets in channel floor
- Compact design minimises rebates at sides and invert
- Flexible design and manufacturing methods provide several alternative options to conventional mounting of channel type penstocks
- Robust construction
- A cost effective solution for high duty applications



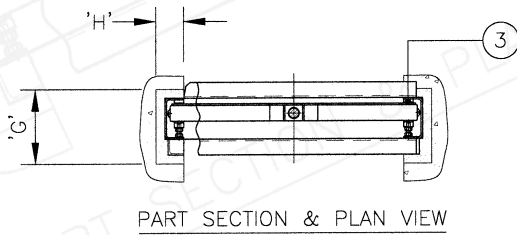
Features

- On and off-seating heads upto top of door
- Adjustable low friction pressure pads to ensure optimum sealing performance
- Integral grout shield
- Rising or non-rising spindle applications for use with our extensive range of operating equipment
- Meets the requirements of BS7775 and DIN 19569-4 Penstocks Standards

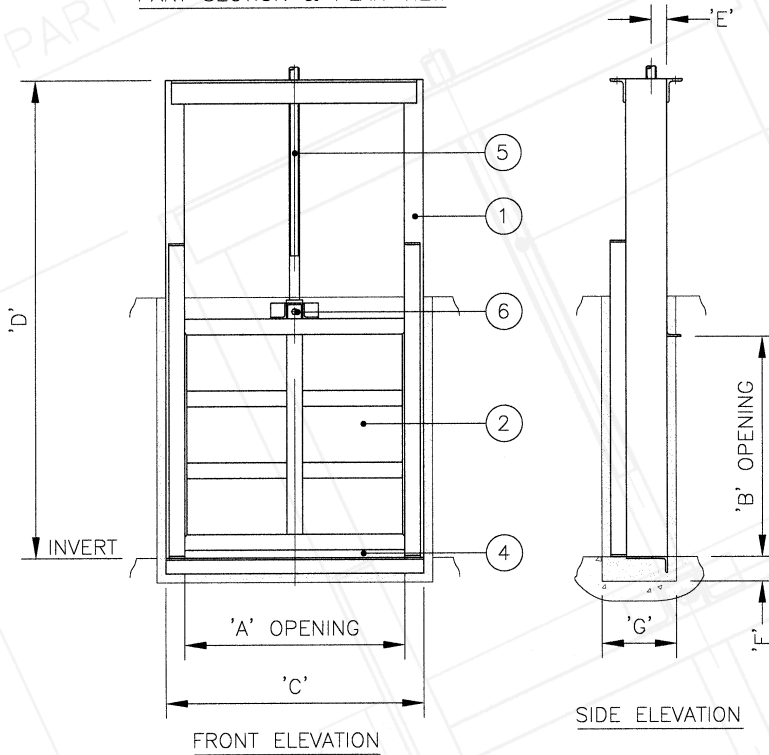
Specifications

SERIES CM - 30, 40 & 50 CHANNEL MOUNTING PENSTOCKS

Size Range: 150mm Square to 2000mm Square Apertures



PART SECTION & PLAN VIEW



FRONT ELEVATION

SIDE ELEVATION

Operating Duty

Application:	Flow control and isolation
Type of Mounting:	Side and invert rebates
Type of Media:	Water and Sewage
Operating Head:	Up to top of door
Direction of Flow:	On & Off-seat

Options

Mounting:	Side wall mounted in channel
Stem Types:	Rising and non-rising
Size Range:	Any size from 150mm to 2000mm in square or rectangular format

Applicable Standards

BS 7775:1995, Specification for general purpose penstocks

Dimensions and Weights

	'A'	'B'	'C'	'D'	'E'	'F'	'G'	'H'	WEIGHT (KG)
SERIES 30	150	150	270	420	49	75	230	85	10
	300	300	420	720	49	75	230	85	35
	400	400	520	950	49	75	230	85	62
	500	500	620	1120	49	75	230	85	105
	600	600	720	1320	49	75	230	85	125
SERIES 40	800	800	920	1720	49	75	230	85	166
	1000	1000	1120	2140	53	85	240	85	295
SERIES 50	1200	1200	1320	2540	53	85	240	85	355
	1500	1500	1652	3180	67	105	305	100	638
	1800	1800	1952	3780	67	105	305	100	765
	2000	2000	2132	4490	67	105	305	100	855

The above table illustrates a small section of the size range. Any size between 150mm and 2000mm is available on request.

Construction Materials

ITEM	DESCRIPTION	MATERIAL
1	Frame	Mild Steel, BS 4360 Gr 43A
		Stainless Steel, BS 970 Gr 304 Stainless Steel, BS 970 Gr 316
2	Door	Mild Steel, BS 4360 Gr 43A
		Stainless Steel, BS 970 Gr 304
		Stainless Steel, BS 970 Gr 316
3	Side Seals	Low Friction Polyolefin
4	Invert Seal	Neoprene
5	Stem	Stainless Steel, BS 970 Gr 304
		Stainless Steel, BS 970 Gr 316
6	Fasteners	Stainless Steel, BS 6105, Gr A4



CHAMBER OF COMMERCE
HEREFORDSHIRE & WORCESTERSHIRE
Delivering Business Link Services



SUPPLIERS OF PENSTOCKS TO THE WATER INDUSTRY

Midland Valves

42 Chaddesley Close | Lodge Park | Redditch | Worcestershire | B98 7ND
Tel: 01527 517542 | Fax: 01527 518087 | Email: mike@midlandvalves.fsnet.co.uk